

EchoMac and Apple Routers

10/15/09

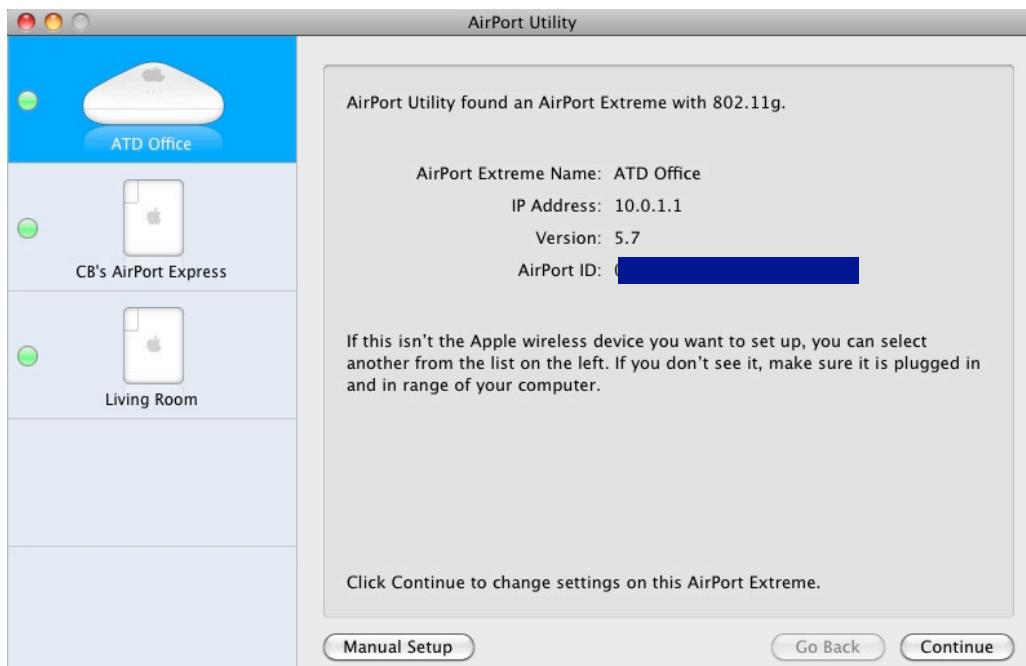
For more information on other routers and associated topics, please go to ...

<http://echomac.sourceforge.net/>

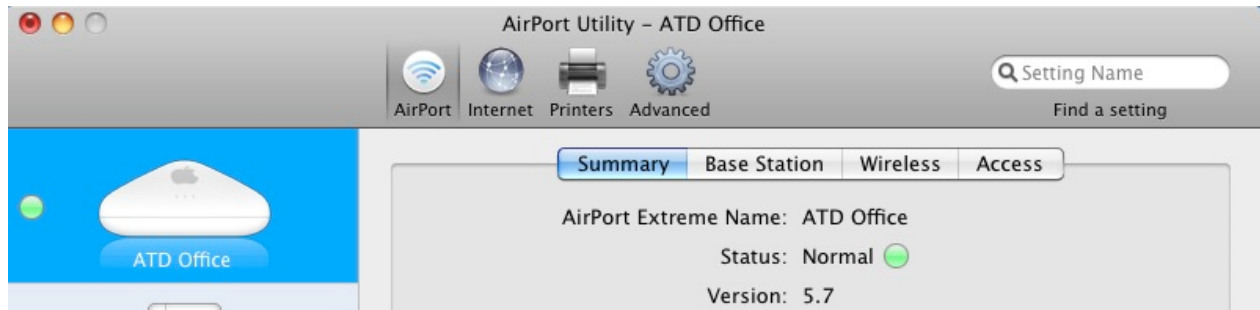
EchoMac did not immediately run for me after installation, and it was because my Apple Airport router does not support port triggering. So, if your EchoMac installation isn't running, you may need to manually configure your system to forward to your Mac's IP address.

This document is a combination of the work Steve, VA3SPH, provided, and my update to include **Snow Leopard** screenshots.

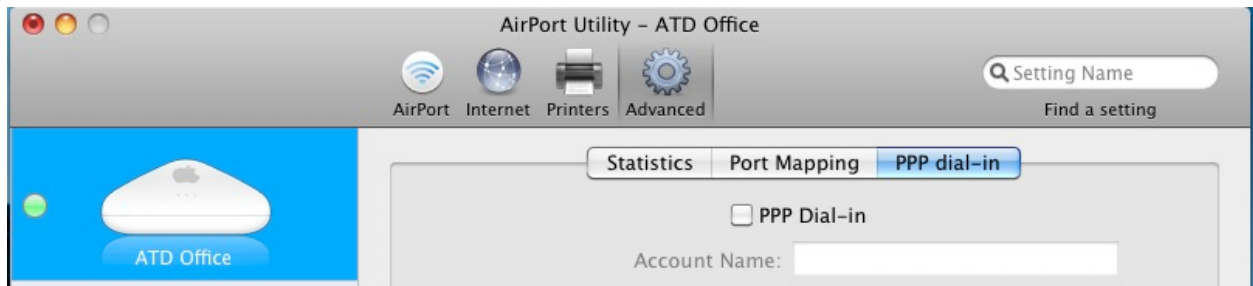
In your Utilities folder, run AirPort Utility, whose opening screen looks like this.



Make sure the router you want to “adjust” is highlighted on the left, and click “Manual Setup.”

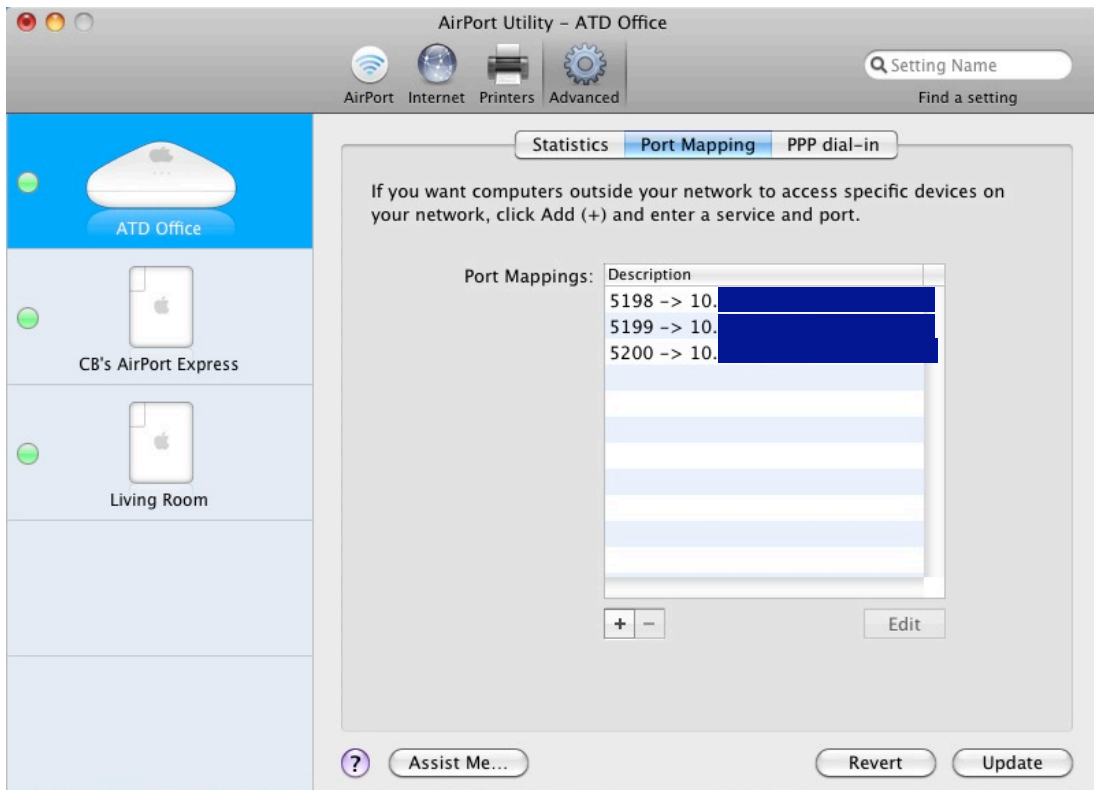


Along the top of the Manual Setup screen ...

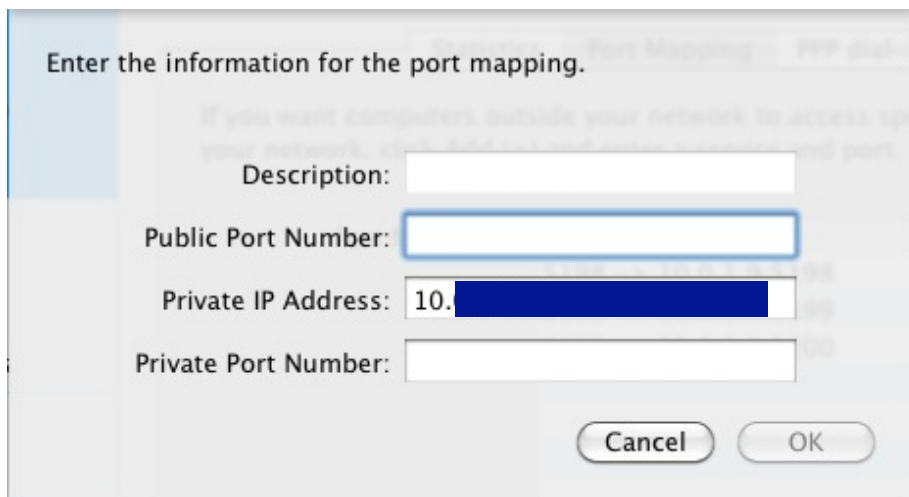


... click “Advanced.”

And then click “Port Mapping” ... and this is where you should be now ...



Click on the “+” sign, and manually add Ports 5198, 5199, and 5200. When completed, your screen should look like the one above.



For whatever reason, I was not able to enter anything in the “Description” box. But that is not a problem.

Don't know your system's “Private IP “Address”? Just go to System Preferences / Network / Advanced / TCP/IP - and there's your IPv4 address.

This got me on the air with EchoMac immediately.

Clint Bradford, K6LCS
<http://www.work-sat.com>

For more information on other routers and associated topics, please go to ...

<http://echomac.sourceforge.net/>